



MF RB SERIES

Fixed Chamber Round Balers

MF RB 3130F, MF RB 3130F Xtracut
& MF RB 3130F Protec



FROM MASSEY FERGUSON

Contents



Page 06
High speed pick-up



Page 08
Hydroflexcontrol - two stage protection system



Page 09
Bale chamber



Page 15
Monitoring and Control



Page 16
Experience, innovation and durability

- 03 High quality fodder and straw
- 04 Fixed Chamber range
- 05 A closer look at the MF RB Series fixed chamber round balers
- 06 High speed pick-up
- 07 Xtracut for optimum cutting performance
- 08 Hydroflexcontrol - two stage protection system
- 09 Bale chamber
- 10 Wrapping options
- 11 Protec baler wrapper combination
- 15 Monitoring and Control
- 16 Experience, innovation and durability
- 17 Customer support
- 19 Specifications & Options



MF RB SERIES

We are striving for perfection in every step of the design and manufacturing process of our products. As a result of our continuous development we proudly introduce a new range of MF fixed chamber balers and Protec baler wrapper combination units, packed with new features and innovations.

New-style side panels enhance ergonomics and numerous improvements under the covers improve performance and bale quality.

Enhancing our baler range to precisely meet the needs of farmers and contractors is our goal, offering solutions to suit their end use or market requirements, their crops, and their terrain.

Whether baling silage, hay or straw, farmers are always looking for high output, cost effective and flexible solutions to produce quality, dense bales which are easy to transport and require minimum storage space.

Consistent bale density is essential for all baled products, and the new range of MF fixed chamber round balers offer farmers the best solution due to their class-leading compaction, cutter and pick-up capabilities. As a result, they are the ideal choice for those looking for high throughput and quality fodder or straw.

For silage requirements, these balers produce tight, well-shaped bales, which are a prerequisite for the fermentation process needed to retain the crop's essential nutrients for forage.

In hay, straw and biomass, the MF RB Series Balers form dense bales which are easy to handle and stack. They also retain their quality for a long period of time.

The MF fixed chamber round balers are therefore suitable for a diverse range of farms and contracting businesses, including mixed, arable and livestock.

MF RB Series Round Balers

Fixed Chamber range



MF RB 3130F

- Reliable and high performing baler producing high density hay or straw bales
- Wide, 2.00m or 2.25m pick-up and packer rotor ensures optimum capacity in the most demanding crops
- 1.5cu.m bale chamber with 18 Powergrip rollers and mechanical tail-gate lock ensures consistent bale shape and density.

MF RB 3130F Xtracut

- Reinforced for maximum output and durability demanded by professional operations and contractors
- The Xtracut cutter features options of 13, 17 or 25 knives, guaranteeing consistent chopping
- Selectable knife banks on Xtracut 17 and 25 provide consistent efficiency and various cutting settings
- Increased diameter roller shafts and heavy-duty greasable bearings in the bale chamber are able to withstand peak loads
- The E-Link control system features a number of baler functions activated from the cab for increased comfort & ease of use for the operator.



MF RB 3130F Protec

- Fixed chamber baler with additional wrapper unit for single pass operation and highest fodder quality
- Unique design foldable wrapping device for reduced transport length offering safe transport
- Low overall height improves crop flow and work in hilly conditions
- Twin film dispensers for faster wrapping and increased output.

A closer look at the MF RB Series fixed chamber round balers

Special Powergrip rollers ensure constant grip for best bale shape and appearance

NEW: Mechanical tail gate locks with pressure sensors help to maintain bale shape

Automatic chain lubrication reduces maintenance time

Proven Varionet wrapping

Powersplit gearbox ensures optimum power distribution

Xtracut cutter - flexible choice for cut length

Camless pick-up – high speed feeding with low maintenance

Hydroflexcontrol - time saving two stage anti-blockage system



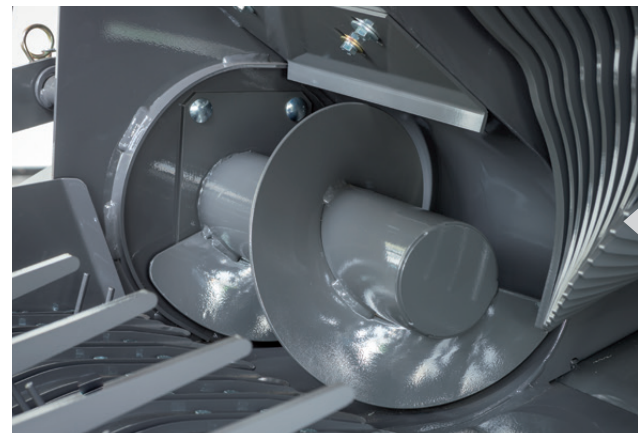
High speed pick-up

Higher operating speeds are possible with the Massey Ferguson camless pick-up design.

With fewer moving parts, the camless pick-up is quieter, simpler and more reliable. Low maintenance and less adjustments save time and increase productivity.

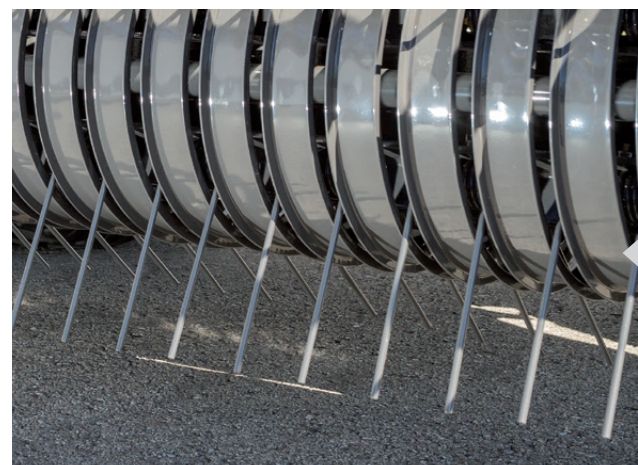
The pick-up system has five tine bars with each one being spaced only just 64mm apart, providing higher capacity and a smoother even feed at high speed.

On the Massey Ferguson round balers, the pick-up is positioned very closely to the rotor, therefore improving crop flow and reducing the risk of blockage.



Feeding augers

Two large capacity 25cm diameter feeding augers direct crop to the centre to create best bale shape.



Heavy duty tines

Five rows of heavy duty tines with large coil diameter for enhanced durability in silage and stony conditions.

Crop press roller option

A reinforced crop press roller equipped with rake is available, to enhance crop flow into the chamber.

Xtracut for optimum cutting performance

Chopping silage whilst baling offers several benefits:

- **Improves** forage quality resulting in better fermentation and palatability
- **Saves time** allowing a faster distribution of silage
- **Reduces waste** during feeding
- **Helps to achieve greater density** thus reducing haulage and wrapping costs

Designed for optimum performance, Massey Ferguson **Xtracut** can be equipped with 13, 17 or 25 knives. Cutter units are fitted with the longest knives on the market, making sure that no material will pass through uncut.

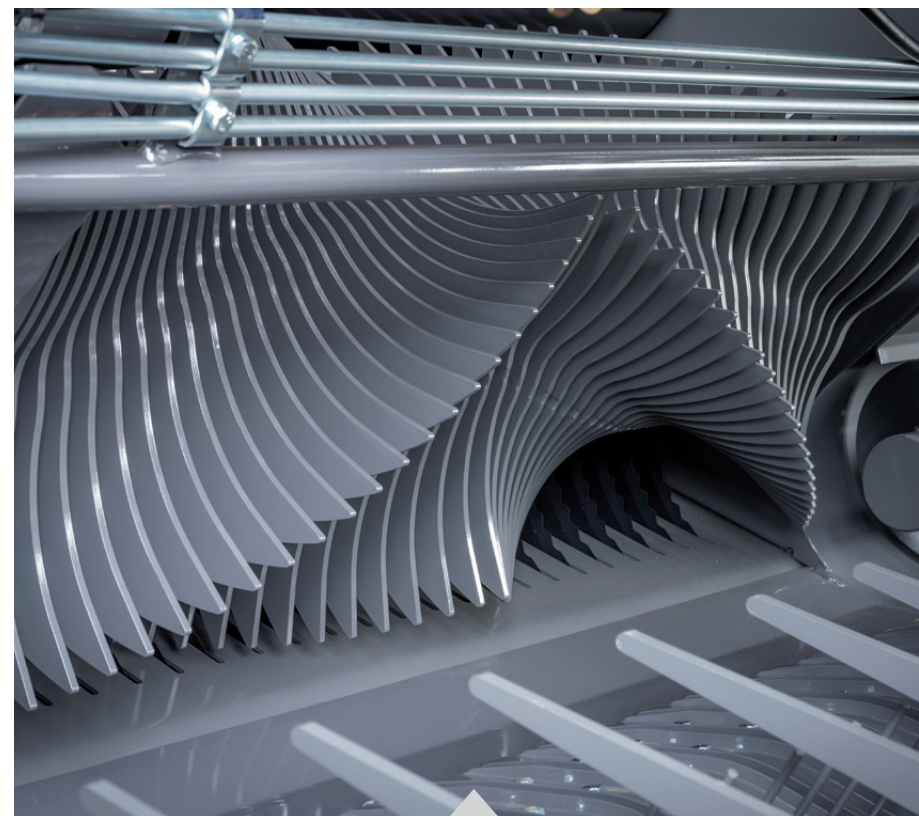
Xtracut 17 and 25 feature two sets of hydraulically operated knife banks with separate control from the cab depending on customer requirements.

The operator can select:

- A single knife bank
- Both knife banks
- Disengagement of all knives



The MF RB 3130F can be equipped with an **Xtracut** with either 13, 17 or 25 knives.



25 knife cutter.

Hydroflexcontrol - Two stage protection system

Racing against weather and time to gather the best quality crop is always a challenge for man and machine.

To maximise efficiency in the field and minimise downtime from crop blockages, the *MF Round balers are fitted with the unique Hydroflexcontrol protection system which works in two stages:

Stage 1. Automatic mechanical floor cushioning to clear minor blockages

Stage 2. Hydraulically controlled floor lowering to clear major blockages



The first stage of Hydroflexcontrol allows movement of the front part of the feed chamber floor and will automatically prevent up to 80% of potential blockages and will keep you going without unnecessary downtime.

Should a major blockage occur, stage two of Hydroflexcontrol is activated by the operator, and is cleared by lowering the rear of the feed table floor hydraulically from the cab, allowing for material to easily pass through, therefore minimizing downtime.

Stage 1



The patented protection system prevents peak loads from turning into blockages by a gentle lowering of the floor which is suspended on rubber blocks or steel springs, depending on the model.

Stage 2



In the event of a blockage the operator can easily open the feed table floor and lower the knives at the same time to provide enough space for material to pass through.

* Standard on MF 3130F Xtracut and MF 3130F Protec

Bale chamber

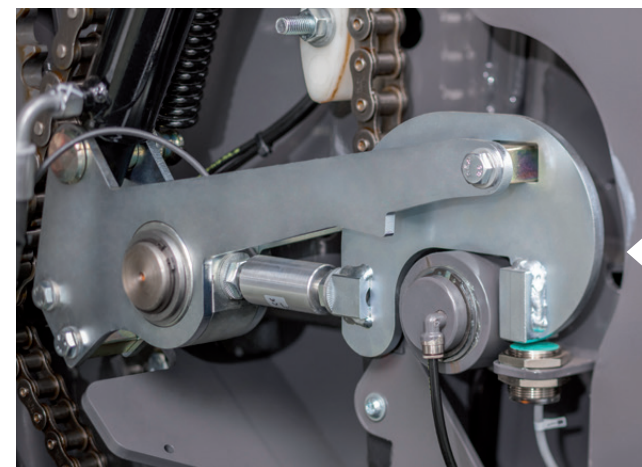
The bale chamber is made up of 18 Powergrip rollers which ensure an effective grasp and quicker bale rotation for higher density and improved bale shape.

Rollers with 10 ribs are made from a seamless solid tube. They are the industry benchmark for durability and performance, known for their proven design and capability to withstand the harshest environments.

The new, improved chamber has a 'spiral' form with slightly reduced diameter at the front thus improving feeding and bale rotation, increasing density and net grip when wrapping.



The roller support bearings in the bale chamber feature new scrapers, efficiently removing debris and moisture from the roller bearings and keeping the outside panels clean.

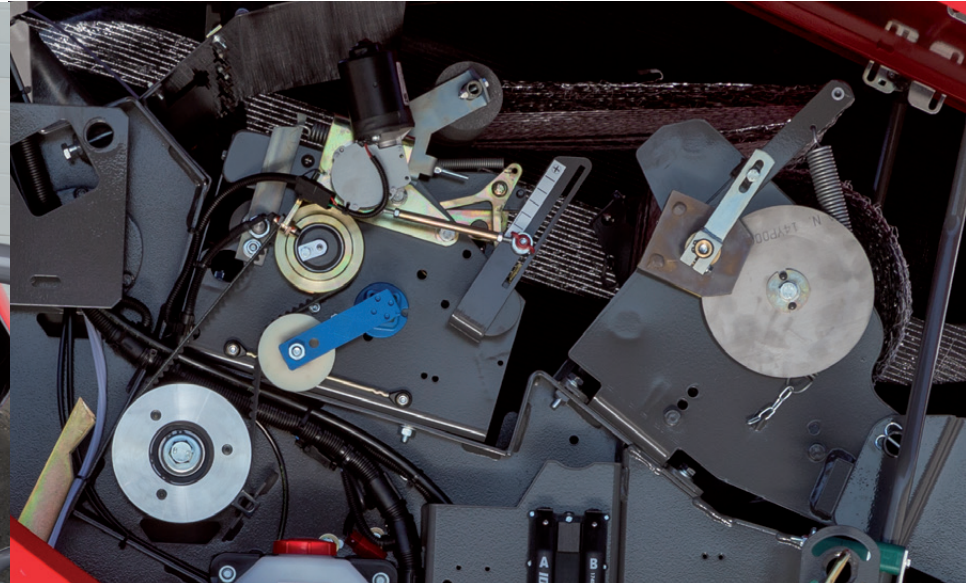
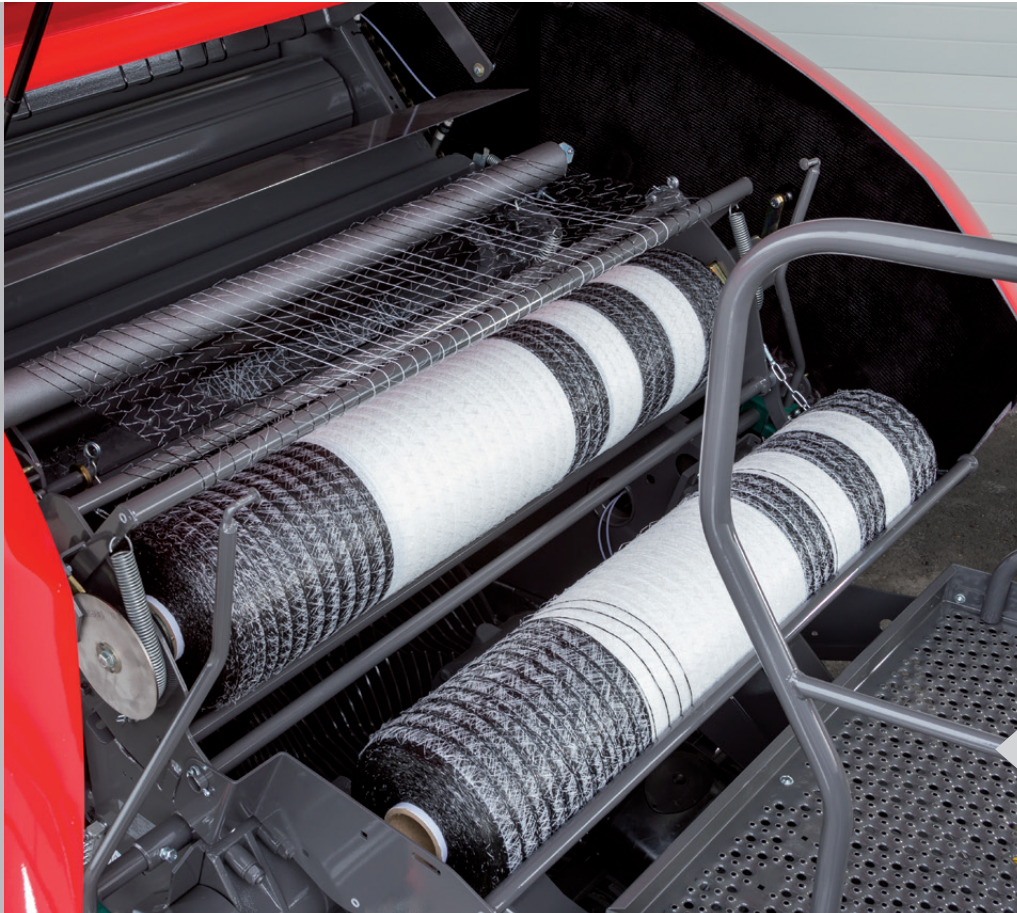


The simple, fast and efficient mechanical tail-gate locking device is now enhanced with pressure sensors on both sides and features left-right indication allowing the operator to monitor the outer layers of bale.

Wrapping options

Perfect wrapping of perfectly formed bales is provided by the **Varionet** system, saving cycle time, tying materials and preserving bales for safe handling and storage afterwards.

The tried and tested Varionet net wrapping system features a special net tensioning and spreading device that is capable of dealing with various widths and types of net, allowing for fast wrapping of bales from edge to edge or over the edge.



Fitted as standard, the **Easy Loading System (ELS)** allows one spare roll to be carried on the baler. Roll replacement can be made in a matter of minutes, thus extending your time in the field and increasing output.

MF RB 3130F Protec – Baler Wrapper Combination Unit

New addition to MF round balers range

Whether your working day is wet or dry, every second counts when baling silage in order to achieve the best quality and preserve the maximum nutrients. Combining the multiple operations of baling and wrapping saves time and fuel, boosts productivity and improves quality.

Our new MF RB 3130F Protec baler combines all the benefits of our fixed chamber baler with the addition of an integrated, specially designed wrapper device for fast, non-stop baling and wrapping on the go.

Bales are instantly protected from changeable weather and forage quality is preserved. Combining baling and wrapping also cuts tractor and labour requirements in a busy silage season, freeing up an operator to stack or transport bales or begin harvesting in another field.



Bale Handling and Transfer



The new combination unit has a lower crop elevation angle, reducing the overall baler height. This feature improves stability, allowing safer and faster hillside operation. It also reduces back pressure in the feeding area, streamlining crop flow and minimising the risk of blockages.



In addition to the transfer arm, the new design features two active guiding plates on both sides of the baler clearly directing the bale to the centre of the wrapper plate allowing for a faster and more secure transfer cycle. For added safety in hillside conditions the unique slope transfer mode allows for the transfer arm to move more slowly while the wrapper ring is lifted higher to receive the bale. This ensures that the bale will be securely delivered to the wrapper even in sloping terrain.

Actively moving plate

Transfer arm



In transport mode the wrapper ring is folded forwards, reducing the overall machine length to just 5.9m for safer transport and improved manoeuvrability.

Bale wrapping and discharge



Once the bale is transferred to the centre of the wrapper table, a hydraulically driven wrapper ring begins its rotation even before the tailgate is fully closed, completing the cycle well before the next bale is formed. Designed to withstand the heaviest bale loads, the robust frame with its quiet running gear operates at up to 35 rpm smoothly for trouble free wrapping, bale after bale.



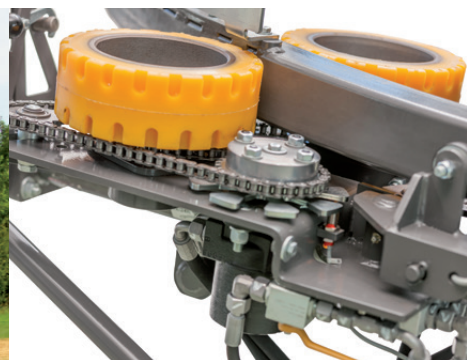
To ensure gentle bale unloading, the wrapping table is lowered, thus minimising the bale's rolling speed, preventing film damage and maintaining the ideal bale shape. An optional bale tipper puts bales on their ends, preventing them from rolling away and making for easier loading on the trailer. The operator can also choose between automatic and manual unloading modes.



High Performance wrapping



The hydraulically driven wrapper table consists of two rollers and three endless belts mounted on a welded frame for extra durability. A sensor underneath the middle belt will allow for wrapping to begin only after the bale is fully positioned on the table, while four large side support rollers keep the bale centred while wrapping.



The wrapping ring is driven by a set of two rubber rollers, ensuring plenty of gripping surface, eliminating slippage and reducing noise levels.



Twelve film roll holders are conveniently located at a comfortable height on both sides of the baler and with two additional rolls installed on the wrapper, increase uptime in the field.



An external control panel on the back of the baler allows control of the tailgate, wrapping ring and table and the film clamps for easy film roll change, maintenance or cleaning.



The wrapper unit can be folded up for safe and convenient field to field transport.

Monitoring and controls



The E-Link Control unit offered as standard on the Massey Ferguson RB 3130F allows the operator a great overview of the key baler processes with all adjustments made through the monitor. Its High Definition screen provides clear working images.

The following functions can be controlled with the E-Link Control terminal:

- Knife selection
- Bale pressure adjustment
- Bale size adjustment
- Net layer adjustment
- Net start/stop/pause
- Visual bale chamber filling
- Softcore bale on/off
- Bale counter
- Total bale counter
- Customer settings
- Sensor and actuator settings



The E-Link Pro monitor, standard on the MF RB 3130F Protec and optional for the MF RB 3130F Xtracut, has integrated ISOBUS technology and features a large bright screen which offers great visibility of multiple parameters, giving the operator more information and control of the baler. If a tractor is fitted with ISOBUS control it is also possible to use the tractor's monitor to view all the key information about the tractor and the baler in one place. The baler wrapper combination is also fitted with a rear view camera for better control of wrapper.

Specific field or customer information, such as the number of bales or hours worked, can easily be set and collected with the Wizard menu and later exported via a USB connection for easy management of records and further performance analysis.



Both the RB baler and RB Protec baler/wrapper combo versions can be specified with ISOBUS connection for utilising tractor monitors.

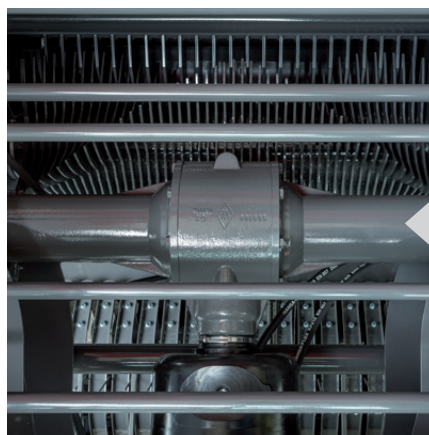
Utilising a single in-cab terminal in the tractor for all implements reduces cab clutter and can make for simpler and more accurate control by drivers who may carry out a wide range of operations with different machines.

Experience, innovation and durability

Massey Ferguson is a world leading brand with extensive experience in hay and forage production on all continents.

The Massey Ferguson round baler range is built to last and designed to exceed your expectations...

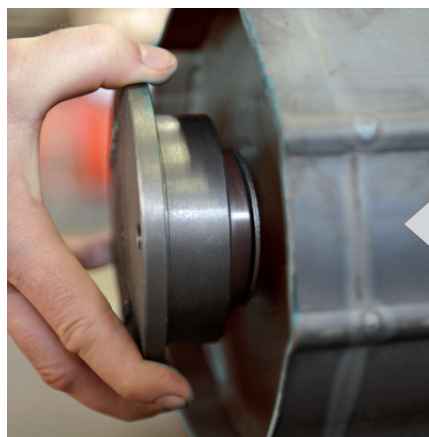
The number of unique and patented features make our balers stand out from the crowd.



The Powersplit gearbox equally divides and transfers power to drive the rotor unit on one side and the roller drives on the other, reducing the overall power requirement by simplifying the drivelines. This results in a more efficient baler which uses less fuel.



Automatic chain lubrication with individual adjustment for each chain guarantees sufficient oil supply, reduces maintenance time and extends chain service life. For added durability the highest quality chains are used throughout the baler.



The bale chamber can experience extreme loads with forces from all directions. The clever bearing housing design allows some movement of the rollers to eliminate major axial loads occurring during operation.



Regular and sufficient lubrication of roller bearings is extremely important, particularly in adverse conditions, for example when baling silage. Centralized grease banks for roller bearing lubrication are located in convenient positions for easier access and reduced service time.

MFservices

Combined services to increase our customers' profit and efficiency



Massey Ferguson and its Distributors and Dealers are always prepared and ready to put in the extra mile to support your purchase. Agriculture can be a tough business, that's why we make sure that you can get support whenever you need it and at crucial times of the year.

Our Dealers are committed to finding the right product for you and then supporting you with the best service, parts provision and backup. You'll be part of a dedicated family of highly skilled specialists who make it their business to give you genuine, top quality service support.

We understand farming and are aware of the challenges each individual faces, therefore our Dealers can help you to plan for a successful future. Ask your Dealer about our finance plans, which can include leasing, hire purchase, contract hire and loan facilities.

You can also secure your assets with an MFCare Service and Extended Warranty Plan*; a complete package aimed at providing total care for your combine including routine maintenance, repair cover and full AGCO backed warranty.

*MFCare Service and Extended Warranty Plan may not be available or may be market dependent. Please contact your Massey Ferguson Dealer to check availability in your area.



Specifications as standard

Model	MF RB 3130F	MF RB 3130F Xtracut	MF RB 3130F Protec
Bale Chamber			
Diameter, m	1.25	1.25	1.25
Width, m	1.23	1.23	1.23
Volume, m ³	1.50	1.50	1.50
Mechanical chamber locking	●	●	●
Varionet net wrapping	●	●	●
Bale ramp	○	●	●
Pick-up			
Width, m	2.00 / 2.25	2.00 / 2.25 / 2.40	2.25 / 2.40
Tine to tine width, m	1.60 / 1.86	1.60 / 1.86 / 2.11	1.86 / 2.11
Pick-up tine spacing, mm	64	64	64
Press roller with rake	○	○	●
Feeding			
Feeder Rotor	●	–	–
Xtracut, 13-knife cutter	–	○	●
Xtracut, 17-knife cutter	–	○	○
Xtracut, 25-knife cutter	–	○	○
Hydroflexcontrol	–	●	●
Monitoring			
E-Link monitor	●	●	–
E-Link Pro	–	○	●
Tractor requirements			
Recommended horsepower, kW/HP	52 / 70	52 / 70	75 / 120
PTO, rpm	540	540	540
Hydraulic spool valves	2	2	2 + LS
Tyre options			
	19.0/45-17	500/43-22.5 500/50-22.5 500/53-20	620/55 R26.5
Dimension and weights			
Transport length, m	4.30	4.30	5.90
Transport height, m	2.60	2.60	3.00
Transport width, m	2.70	2.70	2.85
Approximate weight, kg	3,000	3,200	5,990
Options			
Autolube roller bearing lubrication	–	○	●
Air brakes	○	○	●
Hydraulic brakes	○	○	○

- Not available
- Standard specification
- Optional

Every effort has been made to ensure that the information contained in this publication is as accurate and current as possible. However, inaccuracies, errors or omissions may occur and details of the specifications may be changed at any time without notice. Therefore, all specifications should be confirmed with your Massey Ferguson Dealer or Distributor prior to any purchase.



MASSEY FERGUSON

A world of experience. Working with you.



Web: www.MasseyFerguson.com.au

Facebook: www.Facebook.com/MasseyFergusonGlobal

Twitter: [Twitter.com/MF_EAME](https://twitter.com/MF_EAME)

Instagram: [Instagram.com/MasseyFergusonGlobal](https://www.instagram.com/MasseyFergusonGlobal)

YouTube: www.YouTube.com/MasseyFergusonGlobal

Blog: Blog.MasseyFerguson.com



MASSEY FERGUSON® is a worldwide brand of AGCO.
© AGCO Limited. 2018 | A-A-16822/0818 | English/0818